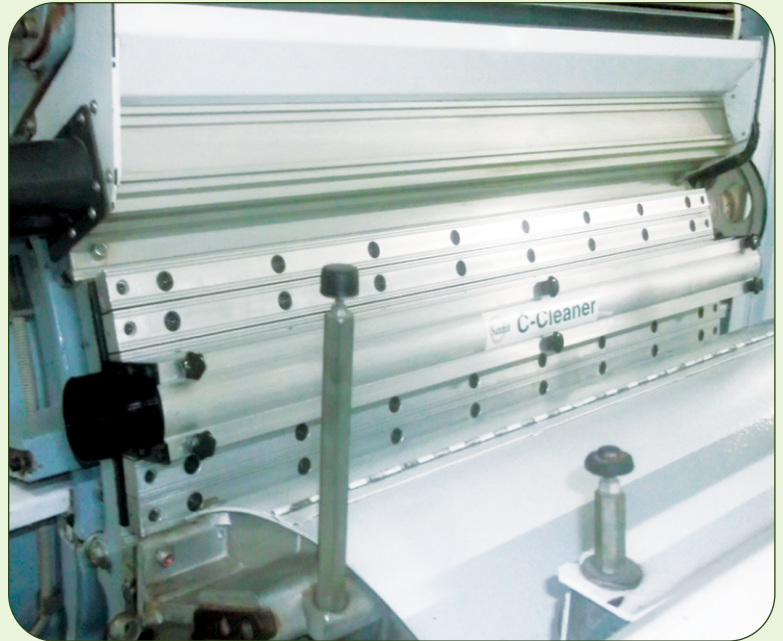
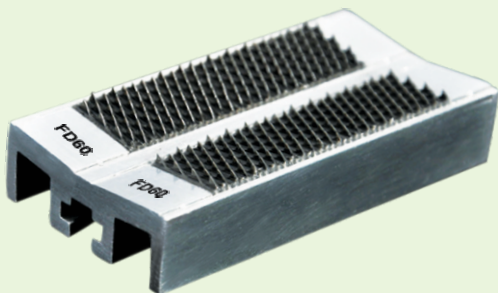
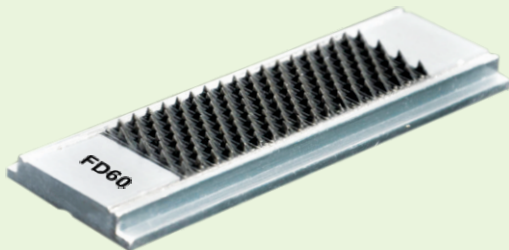
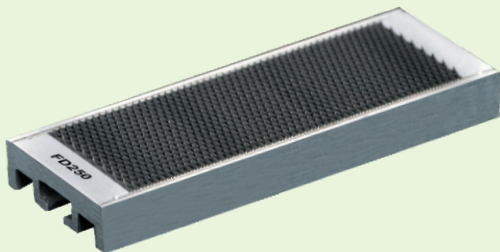
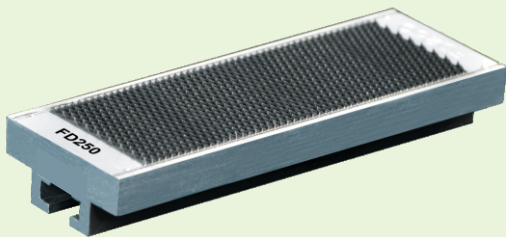
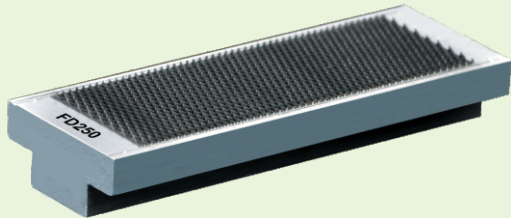




Shriji Sparekraft Impex Pvt. Ltd.

(AN ISO 9001 : 2015 CERTIFIED COMPANY)



New Generation C - Cleaners



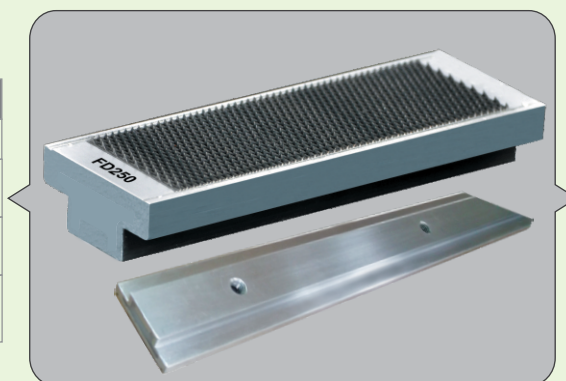
Stationary Flat Tops



Suitable for 40" cards

S.No.	Make	Card Model
1.	LMW	LC 300A (Front - SFD)
2.	LMW	LC 300A - V3 (Front & Back), LC 333 (Front & Back) LC 361 & LC 363 (Front & Back)
3.	LCC	C 1/2, C 1/2a, C 1/3 & LC 100 (Front & Back) C - Cleaners and C-Factors for all Cards
4.	SHRIJI	C - Cleaners for SFL & SFD for C1/3, LC300, LC300A, LC300A - V3, LC333 (Front Conversion (SFD))

Type-H (Threaded Type)



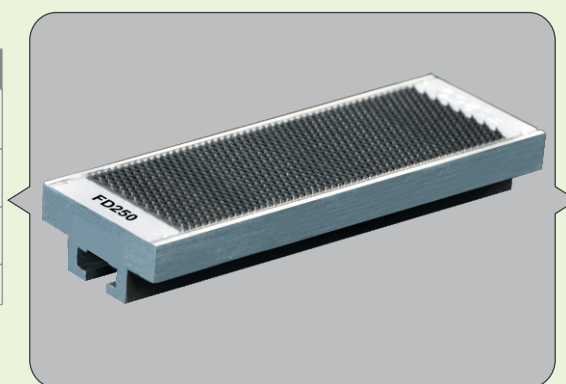
PPSI

FD 90 A
FD 150 A
FD 250 A
FD 350 A
FD 450 A
FD 550 A
FD 650 A

Suitable for 40" cards

S.No.	Make	Card Model
1.	LMW	LC 300 (SFD - Front & SFL - Back), LC 300A (SFL - Back Side) & LC333 (Under Licker - in)
2.	TRUTZSCHLER & TRUMAC	DK 760, DK 760 - old, DK 780, DK 788, DK 800 & DK 803 (Existing 3 Flat C - Cleaners)
3.	TRUTZSCHLER & TRUMAC	DK 803 & DK 903 (Under Licker - in Segments)
4.	SHRIJI	C - System for all cards (Screw type)

Type-A (Screw Type / Slot Type)



PPSI

FD 90 A
FD 150 A
FD 250 A
FD 350 A
FD 450 A
FD 550 A
FD 650 A

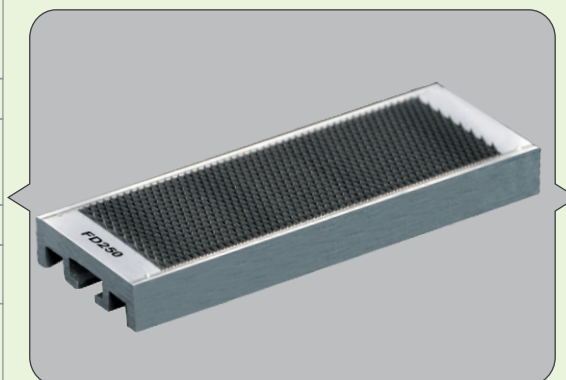
Suitable for 60" cards

S.No	Make	Model
1.	INGOLSTADT	SSKU - 12

Suitable for 40" cards

S.No	Make	Model
1.	TRUTZSCHLER & TRUMAC	DK 715, DK 740, DK 760 (Aluminium Base), DK 800 (Twin Flat), DK 803 (Twin Flat), DK 903, TC 03, TC 05, TC 06, TC 07/S, TC 08, TC 11 & All Twin Flat System for Trutzschler & Trumac Carding Machines
2.	CROSROL	MK - 4, MK - 5, MK - 5A, MK - 5B, MK - 5C, MK - 5D, MK - 6 & MK - 7
3.	BEKAERT (ECC) & ICC - C-Cleaners for RIETER & LMW	C 1/2, C 1/2a, C 1/3, TC 360, Textool TC450, RIETER - C 4, C 10, C 50, C 51 & LMW - LC 636
4.	HOWA (ECC)	CMSK - 3, CMSK - 4 & CMSK - 5, CM300 & CMS80
5.	TOYODA & TOYODA MEIKIN	All model
6.	CHINESE	JFA 186, JFA 201, JFA 203, JFA 203A, JFA 203B, JFA 212, JFA 225, JFA 226, JFA 228, JFA 231C, JWF 1203, JWF 1204 & other CHINESE cards
7.	ICC	ICC - C - Cleaners & Under Licker - in Segments for all Carding Machines
8.	JAPANESE	All Carding machines
9.	MARZOLI	CX 300, CX 400, CX 501 & CX 601 (Front, Back & Under Licker-in)

Type-B (Screw Type / Slot Type)



PPSI

FD 90 A
FD 150 A
FD 250 A
FD 350 A
FD 450 A
FD 550 A
FD 650 A

Suitable for 60" cards

S.No	Make	Model
1.	RIETER	C60, C61 & C70
2.	MARZOLI	C701

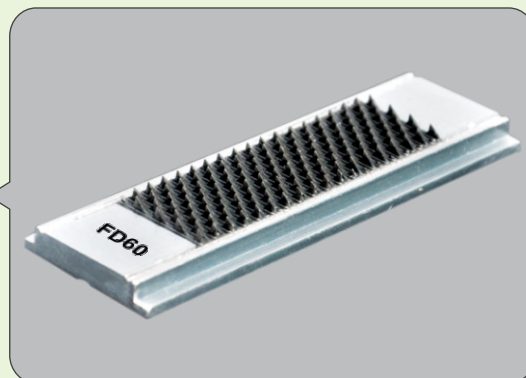
Stationary Flat Tops



Under Lickerin Segments - Suitable for 40" cards

S.No.	Make	Card Model
1.	TRUTZSCHLER & TRUMAC	DK 715, DK 740, DK 760, DK 780 & DK 800
2.	RIETER	C 10, C 50 & C 51
3.	LCC (Combing Bar)	C 1/2, C 1/2a, C 1/3, LC 100, LC 300, LC 300A, LC 300A-V3, LC 361, LC 363, TC 360, TC 450 & other 40" cards
4.	CHINESE	JFA 186, JFA 201, JFA 203, JFA 203A, JFA 203B, JFA 212, JFA 225, JFA 226, JFA 228, JFA 231C, JWF 1203, JWF 1204 & other CHINESE cards
5.	TRUTZSCHLER - BLOW ROOM	CVT 3 & CVT 4 - (FD 60)

Type-C (Slide Type)



PPSI

FD 60

FD 90

Suitable for 40" cards

S.No.	Make	Card Model
1.	CROSROL	MK - 4 & MK - 5 (Clip type C - Cleaners)
2.	TRUTZSCHLER	DK 715, DK 740 & DK 760 (Cast Iron & Al. C - Cleaners)
3.	CHINESE	JFA 186, JFA 201A, JFA 201B, JFA 231A, JFA 221D, C - Cleaners & Other Cards
4.	JAPANESE	HOWA - CMSK 3 & CMS 80 / TOYODA - CK7 & TOYODA MEIKIN
5.	CLIP TYPE C-CLEANERS	All Carding Machines

Type-G (Clip Type)



PPSI

FD 90 A

FD 150 A

FD 250 A

FD 350 A

FD 450 A

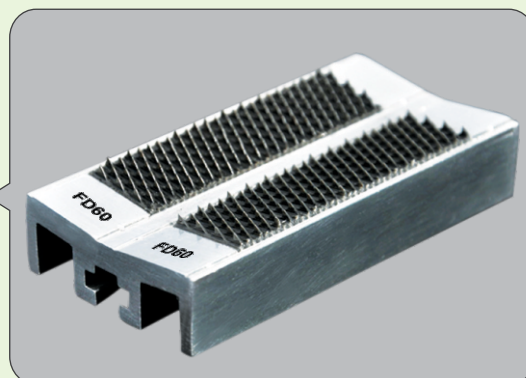
FD 550 A

FD 650 A

Under Lickerin Segments - Suitable for 40" cards

S.No.	Make	Card Model
1.	Trutzschler Card Model	TC 03, TC 05, TC 06, TC 07/S, & TC 08

Type-F (Screw Type)



PPSI

FD 90

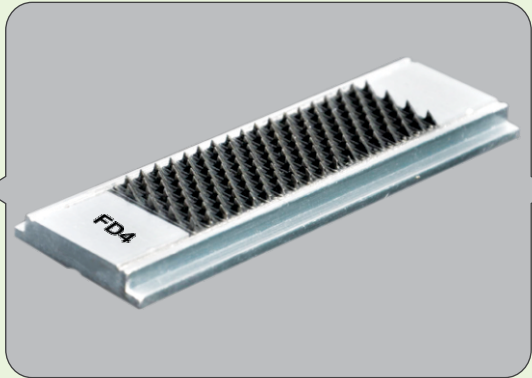
Stationary Flat Tops



UNIFLEX Carding Segment

S.No.	Make	Card Model
1.	RIETER	B60 (Uniflex)

Type-D (Slide Type)



PPSI
FD 4

Under Lickerin Segments - Suitable for 40" cards

S.No.	Make	Card Model
1.	RIETER	C4

Type-E (Slide Type)



PPSI
FD 60

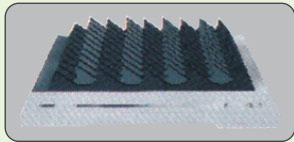
Type-K (Twin Row)



PPSI
FD 60

Trutzschler original cast iron underlickerin segments for DK715/DK740 Cards.

Type-L (Slide Type)



PPSI
FD 60

ECC underlickerin segments for HOWA Cards.

Salient Features

- * Aluminium end caps with extra locking punch holes ensures double safety for SF wires.
- * Scratch free Aluminium coating gives better aesthetic appearance.
- * Burr free and smooth finish, protects the fibre from breakage as a more gentle carding action results highest yarn strength.
- * Higher nep removal efficiency and lower shot fibre content after the initial mounting and throughout the service.
- * Long service life and greater added value.



SFL (Above Lickerin) & SFD (Above Doffer)

SFL (Above Lickerin)

Stationary flats are designed from coarser PPSI - bottom to Finer PPSI - top gives excellent pre opening of heavier fibre tufts. Mote knife and suction device removes trash particles and even distribution of fibres.

SFD (Above Doffer)

Finer PPSI stationary flats, mote knife and smooth finish suction device helps to improve classmate results.

Salient Features

Machine originality will be maintained during modification.

Imported high quality stationary flat tops wires ensures yarn sliver quality and consistency in life.

It gives good parallelization of fibres and results reduces the carding strain and increases the life of cylinder wire and revolving flats.

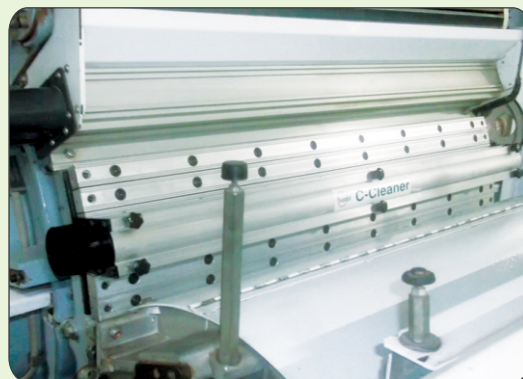
Sturdy Al. base beam with Individual adjustment of stationary flats and mote knife makes accurate gauging which helps carding quality and production at higher speeds.

Smooth finish suction device helps to remove micro dusts, short fibres and motes and help to maintain clean suction in the machine.

No gap between each flat prevents dust liberation. No need for sticking forms between each flat.

Big suction device prevent air curling which ensures no suction chocking during card running.

Aluminium flats are made out of alloy grade smooth finish extrusion materials which gives flat stability.



Recommendation & Scope of Supply

Card Model	Above Doffer (SFD)	Above Licker-In (SFL)	Pre Opening Combing Segments (Under Licker-In)	Process
Trutzschler & Trumac DK 715 & DK 740	5 F + 1 K + Suction	7 F + 1 K + Suction	4 Segments + 2 K	Cotton
	9 F	11 F	4 Segments + 2 K	Synthetic
Trutzschler & Trumac DK 760 DK 780 & DK880 (Single Licker in)	6 F + 1 K + Suction	8 F + 1 K + Suction	-	Cotton/ Synthetic
Trutzschler DK 803 & DK 903 (3 Licker - in - Twin Flat)	6 F + 1 K + Suction	6 F + 1 K + Suction	-	Cotton / Synthetic
Trutzschler & Trumac DK 760 (Cast Iron base C-Cleaners)	6 F + 1 K + Suction	7 F + 1 K + Suction	-	Cotton / Synthetic
CROSROL - MK - 3	6 F + 1 K + Suction	12 F + 1 K + Suction	-	Cotton / Synthetic
CROSROL - MK - 4 & MK - 5	6 F + 1 K + Suction	8 F + 1 K + Suction	4 Segments + 2 K	Cotton / Synthetic
Rieter - C4 & C10	4F + 1 K + Suction	8 F + 1 K + Suction	-	Cotton / Synthetic
Rieter - C50 & C51	7 F + 1 K + Suction	7 F + 1 K + Suction	4 Segments + 2 K	Cotton / Synthetic
LC 300, LC 300A & LC 300A - V3	6 F + 1 K + Suction	-	Economic Model Combing Segment Full Set	Cotton / Synthetic
LC 333	5 F + 2 K + Suction	-	-	Cotton
C 1/2, C 1/2a, C 1/3 (Economic model)	6 F + 1 K + Suction	3 F	Economic Model Combing Segment Full Set	Cotton / Synthetic
Chinese - FA201	7 F + 1 K + Suction	11 F + 1 K + Suction	-	Cotton
Chinese - FA186	5 F	12 F	-	Synthetic
HOWA - CMS80 HOWA - CMSK3 / Toyoda Meikin	6 F	12 F	-	Synthetic
Toyoda - Meikin	6 F + 1 K + Suction	-	-	Cotton

** F - Flats / K - Knife

Combing Segment (Lickerin)



Salient Features

Construction of assembly is replaceable slide (strip) type.

Economic replacement for conventional araldite and punched sheets combing segments.

Sharp points gives better pre-openings that results in minimum loss of good fibres.

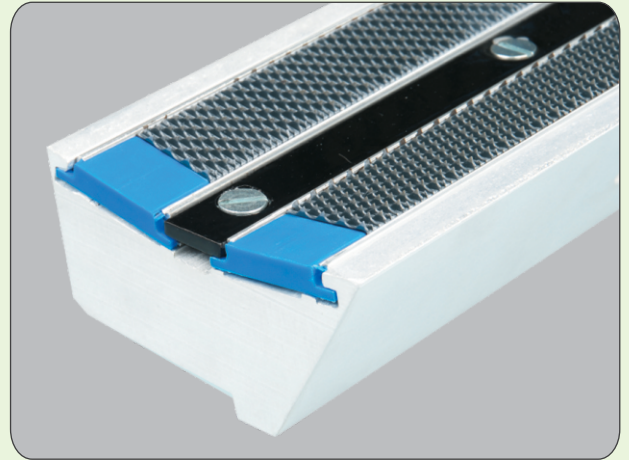
Aluminium combing bars are made out of alloy grade smooth finish extrusion materials which gives flat stability.

Machine original mote knives can be fixed without any alterations in assembly.

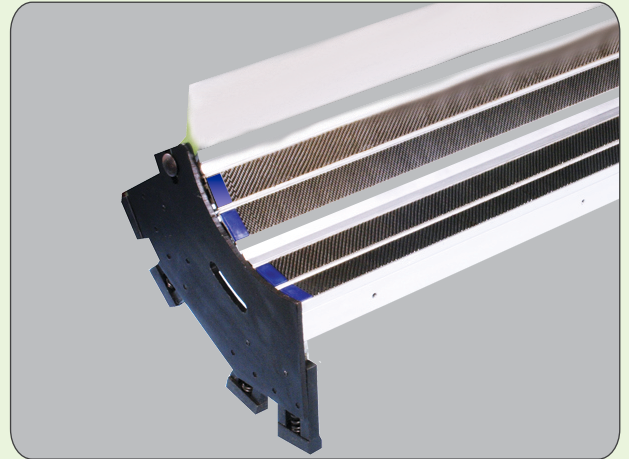
Easy replaceable and cost economic during replacement time.

Suitable: C1/2, C1/2a, C1/3, LC 100, LC 300, LC 300A & LC 300A-V3 cards

Combing Segment - Economic Model (2 Aluminium Bar + 4 Strips)



Combing Segment - Full Set



Pre Opening Combing Segments - (Individual Gauging)

Salient Features

Construction of assembly is individual gauge setting and replaceable slide (strip) type.

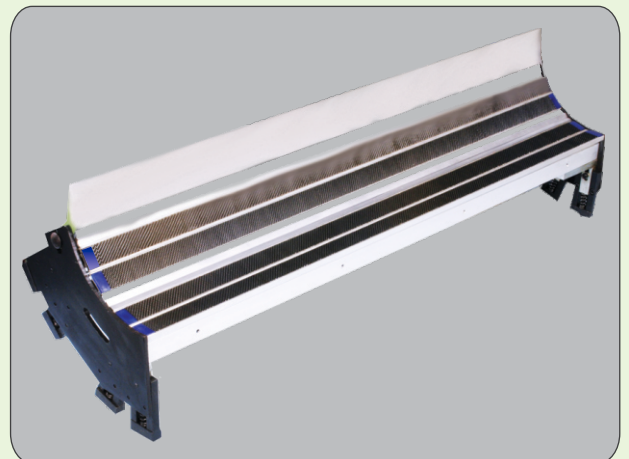
Individual gauge setting ensures accurate gauging which results in better opening of fibre tufts in lickerin zone.

Sharp points gives better pre-opening that results in minimum loss of good fibres.

High quality hardened mote knives help to remove smaller and heavier trash particles results good reduction of neps in lickerin zone.

Easy replaceable and cost economic during replacement time.

Made out of high grade individual flat aluminium bars which gives more stability to ensure accurate gauging.



Suitable: DK 715, DK 740, CROSR0L-MK4 & CROSR0L-MK5 cards

Pin Beater Segment For Blow Room Machines



ERM Pin Beater Segments

Designed with seven pin beater segments and fourteen control sheets to ensure removal of heavy trash and impurities with the help of gentle fibre tufts opening

Better opening ensures to reduce fibre rupture and good fibre loss and reduces chocking.

Ensures cleaning efficiency upto 20%. Ensures consistent fibre tuft quality in blow room machines.

Make	Suitable for
RIETER & LMW	ERM 5/5 (Flexi Clean)
RIETER & LMW	B2/4R & ERM 5/6 (Flexi Clean)
LMW	LB6/1 - Krishner Beater
TRUTZSCHLER	RN - Beater
TRUTZSCHLER	RK - Beater
TRUTZSCHLER	GBR Beater
HENNATEX	Krishner Beater
HENNATEX	Step Cleaner
CROSROL	MK5 & MK6



Suitable: Open end & Fine spinning

RSK Pin Beater Segments

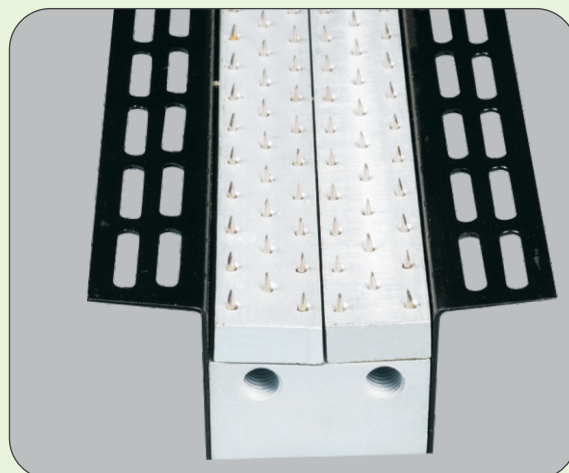
Designed with two pin beater segments and two perforated Control sheets to ensure removal of heavy trash and impurities with the help of gentle fibre tufts opening.

Easy replaceable with two slotted perforated control sheets which reduces fibre rupture and good fibre loss.

Ensures cleaning efficiency upto 20% .

Ensures consistent fibre tuft quality in blow room machines.

Make	Suitable for
TRUTZSCHLER & TRUMAC	RSK 1200
	RSK 1600



Suitable: Open end & Fine spinning

Carding Plates & Knives



Salient Features

- ❖ Carding Plates (Top / Middle / Bottom) made out of High grade Steel materials
- ❖ Aluminium Plates made out of High grade aluminium alloy extrusion
- ❖ Manufactured by precision machines to obtain perfect inner radius and accuracy
- ❖ Perfect design with stiffener ensures longlife and good rigidity
- ❖ Smooth surface ensures burr free to avoid fibre sticking and loading
- ❖ **Suitable for :** Trutzschler – TC11 / TC07 / TC05 / TC03 / DK903 / DK803 / DK780 / DK760 / DK740 / DK715, RIETER C4 / C10 / C50 / C51 / C60 / C70, CROSROL MK-4 / MK5-A/B/C/D / MK6 / MK7, HOWA, TOYODA, MARZOLI, LC300 / LC300A / LC300A-V3, Rieter C1/3 and other 40" cards and all kinds of Blow Room machines

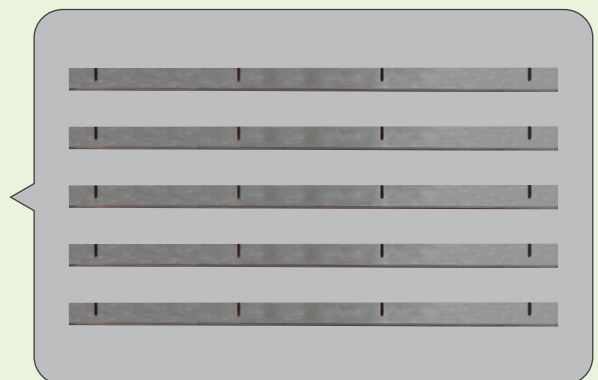
Carding Plates



Salient Features

- ❖ Mote Knives made out of high grade alloy steel material En8 / En31.
- ❖ Smooth finish grinding with Hard Chrome Plating ensures smooth fibre transfer.
- ❖ Hardened to 58 to 60 HRC will ensures long life.
- ❖ Precision dimensional accuracy as per OEM ensures perfect fitment to reduce machine downtime.
- ❖ Long life with competitive price.
- ❖ Special knives can be manufactured as per customer requirement for all machines.
- ❖ **Suitable for :** Trutzschler – TC11 / TC07 / TC05 / TC03 / DK903 / DK803 / DK780 / DK760 / DK740 / DK715, RIETER C4 / C10 / C50 / C51 / C60 / C70, CROSROL MK-4 / MK5-A/B/C/D / MK6 / MK7, HOWA, TOYODA, MARZOLI, LC300 / LC300A / LC300A-V3, Rieter C1/3 and other 40" cards and all kinds of Blow Room machines (ERM, CVT3, CVT4 & Krishner beater)

Mote Knives



Shriji Sparekraft Impex Pvt. Ltd.

(AN ISO 9001 : 2015 CERTIFIED COMPANY)

CORRESPONDENCE ADDRESS :

3, GROUND FLOOR, DUN SHOPPING CENTRE,
OPP. GAMADIA COLONY,
225-227, J. D. ROAD, TARDEO, MUMBAI - 400 007, INDIA

☎ (+91 22) 23824034

☎ (+91 22) 23814034

✉ SPARES@SHRIJISPAREKRAFT.COM

🌐 WWW.SHRIJISPAREKRAFT.COM

SALES PARTNER

The specifications are given in the catalogue based on Market standard
If any specific enquiry please contact our Sales Department.